



Coil Housing Types

■ SLIDE-OUT HOUSINGS

Slide-out housings are used in applications where the coils need to be easily removed to facilitate inspection, cleaning or replacement. The housing contains slots which are sized for the individual coils, which slide in/out and are secured with an attached front bolting plate (see slide-out case design). This type of housing allows for easy coil removal to facilitate inspection, cleaning or replacement.

■ AIRTIGHT HOUSINGS

Airtight housings are built to ensure that there is no cross-contamination between the process air stream and the environment. These housings can be designed to withstand pressures ranging from full vacuum to highly pressurized applications.

■ AIR HANDLING UNITS

In addition to the various types of coils and housings we design and manufacture, Advanced Coil also builds custom, complete and robust air handling units. Apart from the coils themselves, we can include in these units: dampers/louvers, filter banks, blowers/fans, and access doors and panels. In larger air handling units where weight or size may make installation difficult, the separate components can be designed to detach from one another. Manufacturing the entire air handling unit at a single site ensures the compatibility of the individual components and eases the packaging and installation burdens on the end-user.

Coil Housing Types

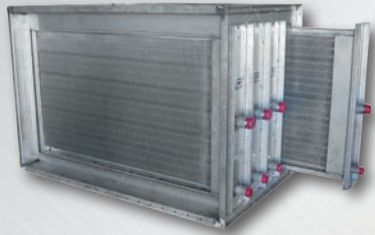


Fig. 1 - A typical duct-mount slide-out coil housing with four steam distributing coils.



Fig. 2 - Welded housing unit with a filter bank, access door, two steam coils, stacked on top of each other, and two more access doors arranged in series. The access doors ease the process of replacing the filters and inspecting and cleaning of the coils.

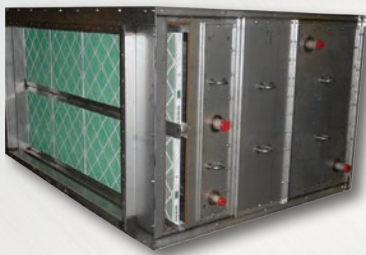
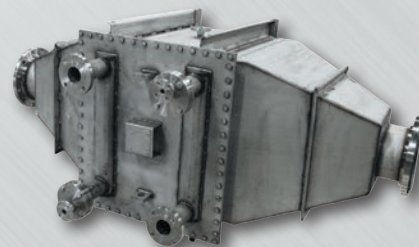


Fig. 3 - An air handling unit that has a filter bank, a slide-out steam coil, a bolted access panel and a slide-out fluid coil arranged in series. A side access panel near the filter bank allows the filters to be easily removed for replacement, and the access panel between the coils permits easy access to inspect and clean each of the coils.



Fig. 4 - Air handling unit utilizing return and outside air with louvers, an access door, a steam coil, another access door and a blower/motor arranged in series. The bolting pattern around the louvers are designed to meet with an existing duct, and the access doors provide a convenient way to conduct maintenance on all components of the air handling unit.

Fig. 5 - An air tight, fully-welded stainless steel housing with slide-out coils designed for high pressure air stream.



Peace of Mind.

Our 5-Year Warranty. Durable. Reliable. Proven.

Our 5-Year warranty demonstrates our products are engineered to perform and built to last. Since 1995 we have stood behind our work. Durable. Reliable. Proven. Ultimately, this is about your peace of mind. Contact us today to learn more.

